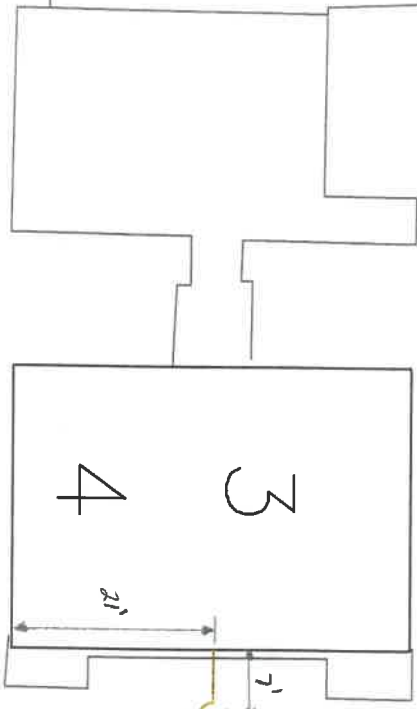
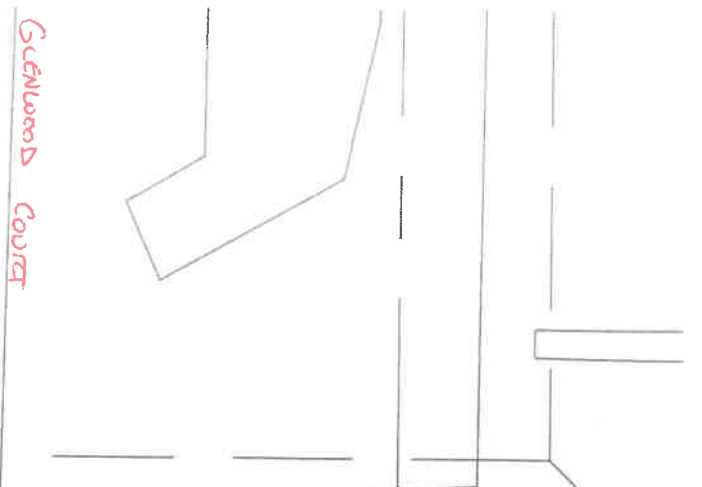


3+4 GLENWOOD COURT  
SANITARY SEWER



6" c/p  
2.5' DEEP F/L  
FENICO TO EX. 6" VIT.

45° BEND  
3' DEEP F/L

FENICO TO  
EX. 6" VIT.  
3' DEEP F/L

6" Service

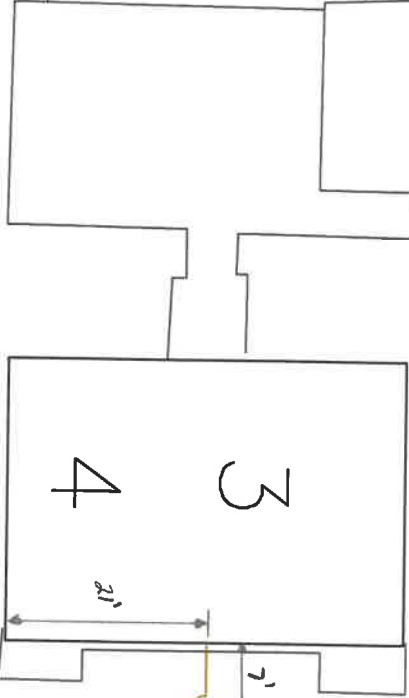
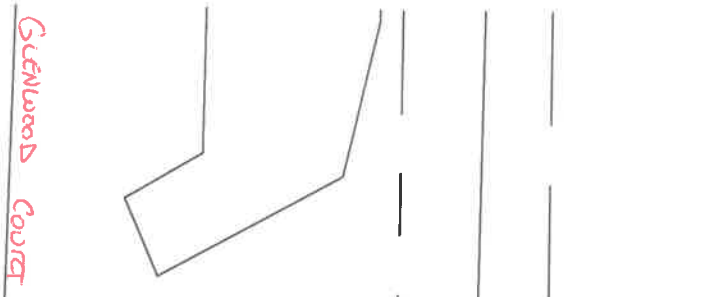
2016  
N  
I = 20'

DATE: 1-7-16  
INSTRUED BY: SHAPIUS LLC/MOORE PUMBERG  
INSPECTED BY: MANDY CRESSLAND



15'

3+4 GLENWOOD COURT  
SANITARY SEWER



6" c/b  
2.5' DEEP F/L  
FERRO TO EX. 6" VIT.

1/2" BEND  
3' DEEP F/L

FERRO TO  
EX. 6" VIT.  
3' DEEP F/L

6" Service



DATE: 1-7-16  
INSTALLED BY: JAHILLIS LLC/MOORE PUMPING  
INSPECTED BY: MANDY GROSSMUND



15'